

35VX

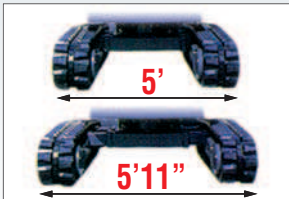


COMPACT EXCAVATOR SALES LLC

400 Production Court
 Elizabethtown, KY 42701
 Phone: 800.538.1447 Fax: 270.737.0419
 www.ihices.com



* Heatland Construction Equipment * (800) 688-2678 * ihicoweb.com *



Wide Spanner

Spanner function (5' ↔ 5'11") has been equipped as standard. The wide span allows improved stability while allowing entry into tight spaces.



Closer distance between bucket and backfill blade.

By optimizing attachment geometry, digging performance near the backfill blade has been improved.



New environmentally friendly engine.

Clean engine compliant with exhaust emission for EC Stage IIIA and EPA Interim Tier4.



Full-opening cover.

The engine cover, right side cover all can easily be fully opened.

Eco-friendliness and Safety

- Engine compliant for EC Stage IIIA and EPA Tier4.
- Conform to the EC low noise regulation.
- 4 post canopy (ROPS&TOPS) equipped as standard.
- Swing parking brake equipped as standard.

Easy Operation

- Closer distance between bucket and backfill blade.
- Joystick lever control enables precision operation.
- Keeps boom drift at minimal levels.
- Largest operation space in its class.
- A large backfill blade makes backfilling easier and offers high durability.
- Spanner function (5' ↔ 5'11") has been equipped as standard.

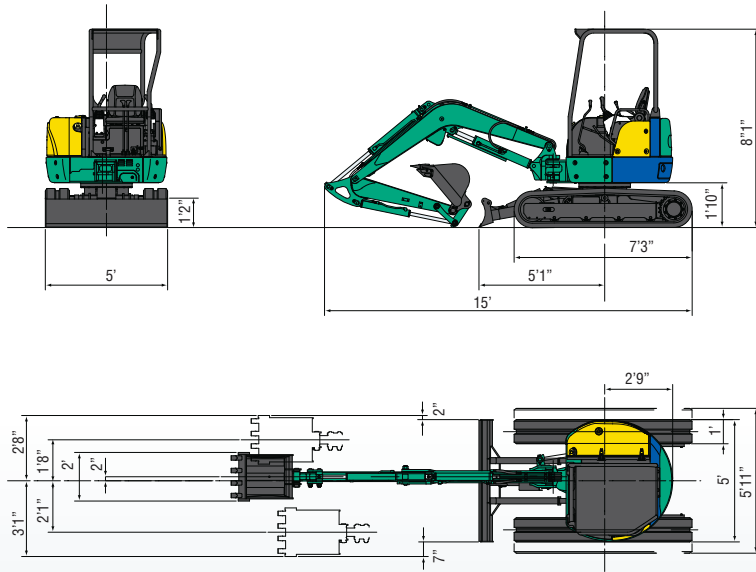
Easy Maintenance

- Sintering metal bush extends greasing interval.
- Aluminum radiator and oil cooler resist rusting
- Segmented boom cylinder hoses for easier replacement.
- Full-opening engine cover for easy maintenance.

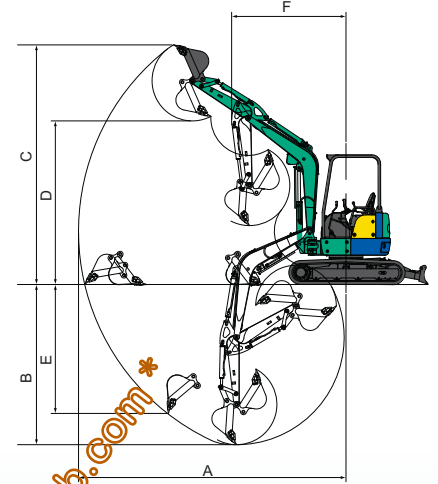
Rugged Body

- Embedded boom lamp to prevent damage.
- The engine cover and the side cover are pressed steel and very rugged.
- Bucket cylinder hoses are placed inside the arm.

■ Dimensions



■ Working Range



	4post or Cabin
A Max. digging radius	17'9"
B Max. digging depth	11'4"
C Max. digging height	16'2"
D Max. dumping height	11'1"
E Max. vertical digging depth	9'8"
F Min. front turning radius	7'2"
At right boom swing	5'8"



35VX

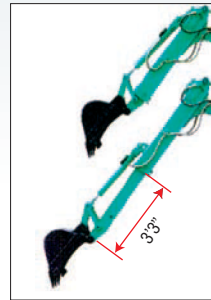
Mini Excavator

Standard Bucket Capacity: ISO 3.9 cu. ft.

**Unrivalled 5'-5'11" Variable Width.
Stability and Transportability.**

■ 35VX2 Specifications

Model	35VX
• Performance	
Bucket capacity	3.9 cuft
Bucket width	24"
Operating weight : 4post (Cabin)	7507 lbs (7727 lbs)
Transportation weight : 4post (Cabin)	7341 lbs (7562 lbs)
Swing speed	8.8 mph
Travel speed (low/high)	1.7 mph / 3 mph
Gradeability	30°
Ground pressure	4.2 psi
Max.bucket digging force	7688 lbs
• Engine	
Model	YANMAR 3TNV88
Rated output	27.6 hp / 2300 rpm
Fuel tank capacity	9.2 gal
• Boom swing system	
Type	Boom offset with hydraulic cylinder
Swing angle (L/R)	50° / 90°
• Hydraulic system	
Pressure	3000 psi
Pump hydraulic flow	10.6 gal/ min x 2 + 6.5 gal /min
Type-Piston/ Gear	2 Piston + 2 Gear
Auxiliary Flow	16.6 gal
• Backfill blade	
Size	60" x 14"
Lift above ground / Drop below ground	14.6" / 15"



Slide Arm



Steel Shoe



Steel Cabin

■ Options

• Buckets
12"
18"
24"
48" Ditch Cleaning Bucket
48" Hydraulic Swivel Bucket
• Steel Cabin
• Steel Tracks
• Slide Arm
• Hydraulic Thumb
• Quick Coupler