

HOW TO STAY DETACHED ON THE JOB.



Our quick-disconnects and slide collars allow you to easily detach your directional heads and reamers from your drill rig in a snap. Heat-treated for maximum strength, they'll keep you moving fast – without any weak links.

DELUXE QUICK-DISCONNECTS

- *Completely heat-treated alloy for maximum durability*
- *Spiraled carbide studs to minimize wear on quick-disconnect and collar*
- *Internal check valve to minimize clogging*
- *1/2" bolt retains slide collar*

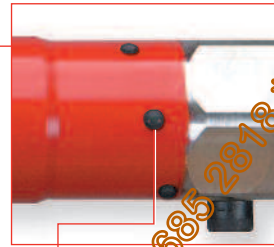
VLR-40F-L43F Deluxe Quick-Disconnect for D24x40a



■ *Internal check valve*

Compare These Features

| Directional Depot | Vermeer |
|-----------------------------|---------------------|
| 1/2" retaining bolt | 3/8" retaining bolt |
| Carbides for wear reduction | Not Available |
| Drill fluid check valve | Not Available |



■ *Carbide studs*

Replacement Quick-Disconnects for Vermeer Navigator

| Deluxe Quick-Disconnects | |
|---|-----------------|
| Navigator D7x11, D10x15 | Part # |
| 2" Hex Quick-Disconnect for D7x11, D10x15 | VLR-31F-L42F-XL |
| Navigator D16x20 | Part # |
| 2-1/2" Hex Quick-Disconnect for D16x20 | VLR-32F-L43F |
| Navigator D24x26 | Part # |
| 2-1/2" Hex Quick-Disconnect for D24x26 | VLR-30F-L43F-XL |
| Navigator D24x40a | Part # |
| 2-1/2" Hex Quick-Disconnect D24x40a | VLR-40F-L43F |



Attach a Pullback Swivel directly to your Quick-Disconnect.
See page 43.

VALUE QUICK-DISCONNECTS

- *Completely heat-treated alloy for maximum durability at a value price*
- *1/2" bolt retains slide collar*

VLRV-30F-L43F-XL Value Quick-Disconnect for D24x26



Replacement Quick-Disconnects for Vermeer Navigator

| Value Quick-Disconnects | |
|---|------------------|
| Navigator D16x20 | Part # |
| 2-1/2" Hex Quick-Disconnect for D16x20 | VLRV-32F-L43F |
| Navigator D24x26 | Part # |
| 2-1/2" Hex Quick-Disconnect for D24x26 | VLRV-30F-L43F-XL |
| Navigator D24x40a | Part # |
| 2-1/2" Hex Quick-Disconnect for D24x40a | VLRV-40F-L43F |

Replacement Quick-Disconnects for Astec

| Value Quick-Disconnects | |
|--|--------------|
| Astec 6030 | Part # |
| 2-1/2" Hex Quick-Disconnect for Astec 6030 | ALR-63F-L43F |
| Astec DD65 | Part # |
| 1-3/4" Octagon Quick-Disconnect for Astec DD65 | ALR-65F-L65M |
| Astec DD1215, DD1416 | Part # |
| 2-1/4" Octagon Quick-Disconnect for Astec DD1215 | ALR-15F-L58M |
| Astec DD2024 | Part # |
| 2-1/2" Octagon Quick-Disconnect for Astec DD2024 | ALR-22F-L54M |
| Astec DD3238 | Part # |
| 2-1/2" Hex Quick-Disconnect for Astec DD3238 | ALR-38F-L43F |



To place an order or find a dealer **800-833-1252**

Fax 24 hours a day: **805-614-9548**

www.melfredborzall.com



REPLACEMENT QUICK-DISCONNECTS FOR DITCH WITCH EZ-CONNECT 2 & 3

- Completely heat-treated alloy for maximum durability
- Precision gun-drilled and CNC machined

| EZ Quick-Disconnects | |
|---|----------------|
| Ditch Witch JT520 | Part # |
| 1-1/2" Octagon Quick-Disconnect for JT520 | DLR2-05M-L520M |
| Ditch Witch JT920/JT920L | Part # |
| 2" Quick-Disconnect for JT920/JT920L | DLR2-01AM-L55M |
| Ditch Witch JT1220 | Part # |
| 2-1/4" Quick-Disconnect for JT1220 | DLR2-34M-L58M |
| Ditch Witch JT1720 | Part # |
| 2-1/2" Quick-Disconnect for JT1720 | DLR2-86M-L54M |
| Ditch Witch JT2020 | Part # |
| 2-1/2" Quick-Disconnect for JT2020 | DLR2-20M-L54M |
| Ditch Witch JT2720 | Part # |
| 2-1/2" Quick-Disconnect for JT2720 | DLR2-35M-L54M |
| Ditch Witch JT2720 Mach 1 | Part # |
| 2-3/4" Quick-Disconnect for JT2720 Mach 1 | DLR2-36M-L56M |
| Ditch Witch JT3020 Mach 1 | Part # |
| 2-3/4" Quick-Disconnect for JT3020 Mach 1 | DLR3-36M-L59M |
| Ditch Witch JT4020 | Part # |
| 3" Quick-Disconnect for JT4020 | DLR2-42M-L57M |

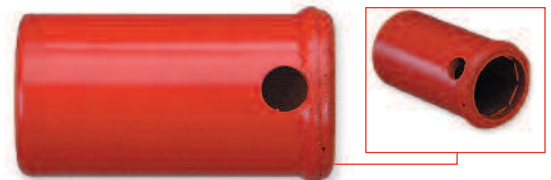


All collars are not the same!
DIRECTIONAL DEPOT GIVES YOU A CHOICE

- Extra-heavy wall thickness
- Completely heat-treated alloy for maximum durability
- Available with carbide studs or hardfacing for maximum wear life

| Collars | |
|--|----------------|
| Hex Slide Collars for Vermeer | Part # |
| 2" Hex Collar for D7x11, D10x15 | VLR-20-HC |
| 2" Hardfaced Hex Collar for D7x11, D10x15 | VLR-20-HC-HF |
| 2" Carbide Hex Collar for D7x11, D10x15 | VLR-20-HC-C |
| 2-1/2" Hex Collar for D16x20, D24x26, D24x40, D40x40, D18x22, D20x22 | VLR-25-HC |
| 2-1/2" Hardfaced Collar for D16x20, D24x26, D24x40, D40x40, D18x22, D20x22 | VLR-25-HC-HF |
| 2-1/2" Carbide Collar for D16x20, D24x26, D24x40, D40x40, D18x22, D20x22 | VLR-25-HC-C |
| Hex Slide Collars for Depot Quick-Disconnects going to Astec | Part # |
| 2-1/2" Hex Collar for Astec 6030, DD3238 | VLR-25-HC |
| 2-1/2" Hardfaced Hex Collar for Astec 6030, DD3238 | VLR-25-HC-HF |
| 2-1/2" Carbide Hex Collar for Astec 6030, DD3238 | VLR-25-HC-C |
| 1-1/2" Octagon Collar for Astec DD65 | DL520-15-OC |
| 1-1/2" Hardfaced Octagon Collar for Astec DD65 | DL520-15-OC-HF |

VLR-20-HC-HF 2" Hardfaced Hex Collar



■ Hard face ring to reduce wear



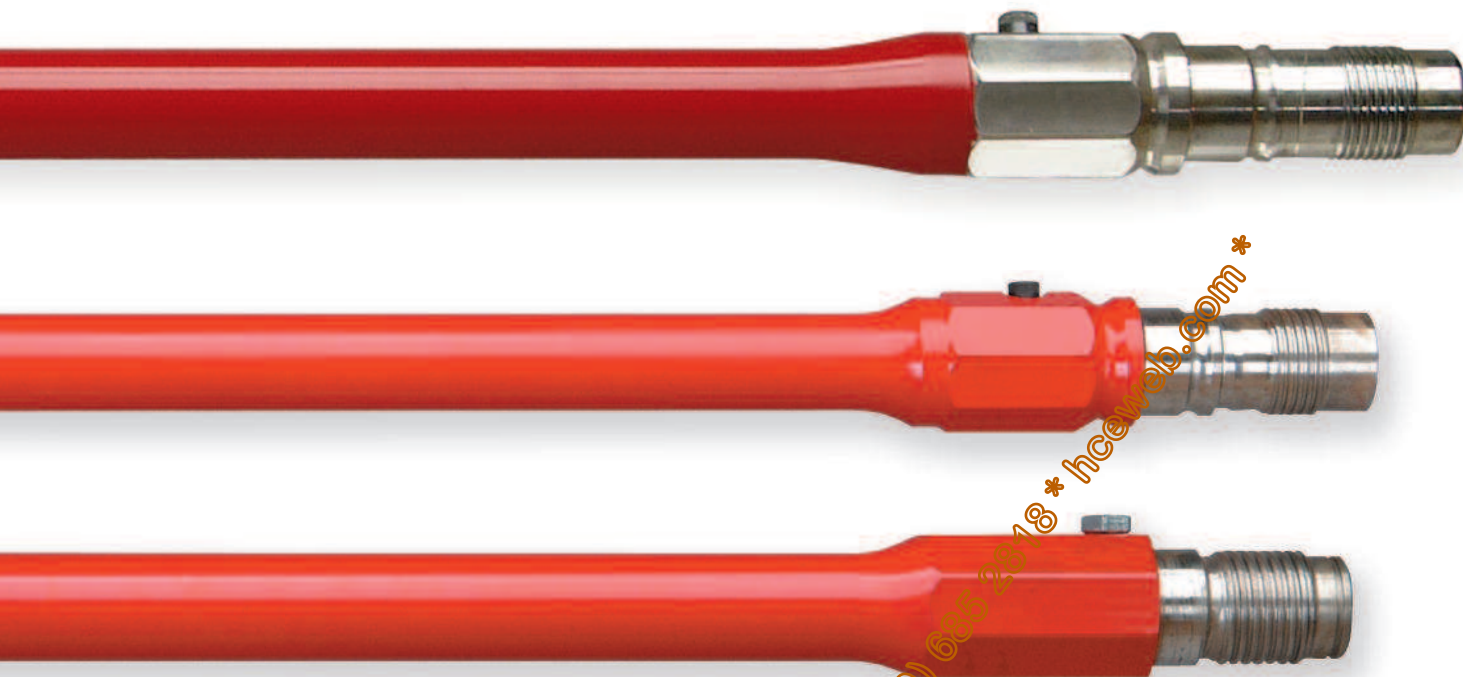
VLR-25-HC 2-1/2" Hex Collar



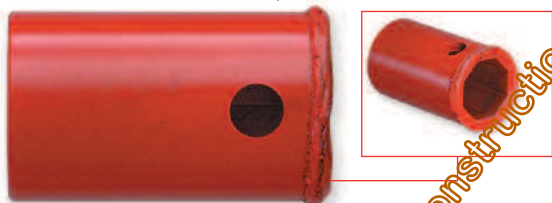
To place an order or find a dealer **800-833-1252**

Fax 24 hours a day: **805-614-9548**

www.melfredborzall.com

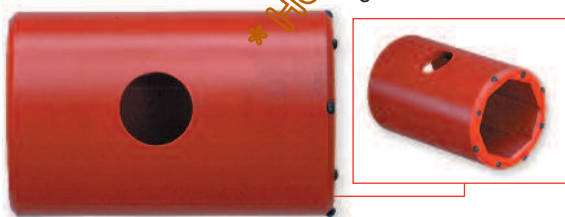


DL53-25-OC-HF 2-1/2" Hardfaced Collar



■ **Hard face ring to reduce wear**

DL54-25-OC-C 2-1/2" Octagon Collar



■ **Carbide studs greatly increase collar life**

Collars

| Octagon Slide Collars for JetTrac | Part # |
|---|---------------|
| 2" Octagon Collar for EZ-1 - JT820, JT920, JT920L | DL51-18-OC |
| 2" Hardfaced Collar for EZ-1 - JT820, JT920, JT920L | DL51-18-OC-HF |
| 2" Octagon Collar for EZ-2 - JT920, JT920L, JT921 | DL55-18-OC |
| 2" Hardfaced Collar for EZ-2 - JT920, JT920L, JT921 | DL55-18-OC-HF |
| 2-1/2" Octagon Collar for EZ-1 - JT1720, JT2720, JT3510 | DL53-25-OC |
| 2-1/2" Hardfaced Collar for EZ-1 - JT1720, JT2720, JT3510 | DL53-25-OC-HF |
| 2-1/2" Carbide Collar for EZ-1 - JT1720, JT2720, JT3510 | DL53-25-OC-C |
| 1-1/2" Octagon Collar for EZ-2 - JT520 | DL520-15-OC |
| 2-1/4" Octagon Collar for EZ-2 - JT1220 | DL58-22-OC |
| 2-1/4" Hardfaced Collar for EZ-2 - JT1220 | DL58-22-OC-HF |
| 2-1/4" Carbide Collar for EZ-2 - JT1220 | DL58-22-OC-C |
| 2-1/2" Octagon Collar for EZ-2 - JT1720, JT2020, JT2720 | DL54-25-OC |
| 2-1/2" Hardfaced Collar for EZ-2 - JT1720, JT2020, JT2720 | DL54-25-OC-HF |
| 2-1/2" Carbide Collar for EZ-2 - JT1720, JT2020, JT2720 | DL54-25-OC-C |
| 2-3/4" Octagon Collar for EZ-2 - JT2720 Mach1 | DL56-27-OC |
| 2-3/4" Hardfaced Collar for EZ-2 - JT2720 Mach1 | DL56-27-OC-HF |
| 2-3/4" Octagon Collar for EZ-3 - JT3020 Mach1 | DL59-27-OC |
| 2-3/4" Hardfaced Collar for EZ-3 - JT3020 Mach1 | DL59-27-OC-HF |
| 3" Octagon Collar for EZ-2 - JT4020, JT4020 Mach1 | DL57-30-OC |
| 3" Hardfaced Collar for EZ-2 - JT4020, JT4020 Mach1 | DL57-30-OC-HF |

* Heartland Construction Equipment * (800) 605-2318 * hceweb.com *



To place an order or find a dealer **800-833-1252**

Fax 24 hours a day: **805-614-9548**

www.melfredborzall.com

